



# Glasteel™

## Installation Instructions and Guidelines For: Glasliner FRP Panels

Read all instructions before installation. Glasliner panels should only be installed over solid wall surfaces (wood, plasterboard, etc.). Wall surfaces should be clean, flat, dry and smooth. Uneven wall surfaces should be corrected for best results. Liner panels will form to the contour of the wall surface when attached. Drop in ceiling panels are available. Clips or caulking are recommended to hold ceiling panels in place.

*NOTE: All Glasliner Panels are U.S.D.A. approved.*

### Inspection, Storage and Preparation

Panels should be inspected promptly upon receipt in a well lit area to insure customer satisfaction with the liner panels before installation. Panels should only be stored in a dry area. Do not store panels outdoors. Panels should be unwrapped and removed from skid and stacked on a flat, dry surface. Normal fire-safety precautions should be taken when storing and using panels.

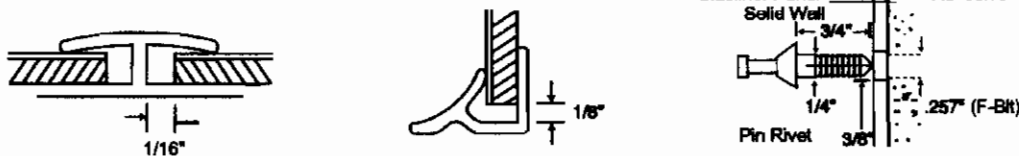
### Tools

Panels can be cut using power saws with carbide tip blades. Liner panels may also be cut with masonry blade. Panels may be drilled for fastening with a metal drill bit. A masonry bit should be used when drilling in concrete, if required. If drill bit becomes worn during installation, replace with a new one.

*Caution: Protect eyes with goggles and cover mouth with a filter mask when cutting Glasliner panels.*

### Expansion & Contraction

Glasliner panels will expand and contract due to changes in temperature. Allow a 1/8" gap at ceiling and base. Allow 1/16" gap between panels and division bars. If face mounted moldings (T-Bar, Batten, two piece division bar, etc.) are used, allow a 1/8" gap between panels. See diagrams below.



Allow more space for expansion and contraction of panels longer than 8' and in areas with high fluctuations in temperature. Pre-drilled holes for Glasliner panels should be slightly larger than the diameter of fastener shank to allow for normal expansion and contraction. See diagram.

*NOTE: Allow for expansion of panels when installing around pipes, conduits, electrical outlets, etc.*

### Moldings & Sealants

Use of moldings and silicone sealant with panels is recommended to achieve a moisture resistant installation. Moldings also give the installation a "finished" appearance.

Cut moldings to size and place silicone sealant into channel of moldings during installation. Place moldings on panels before fastening, if required. See diagrams below.



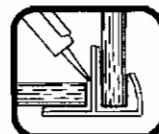
DIVISION BAR



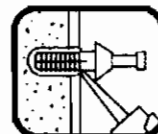
CAP



INSIDE CORNER



OUTSIDE CORNER



NYLON RIVET

In high moisture and frequent washdown areas should be placed between moldings and floor to prevent moisture from penetrating the back of the panel substrates. On cement floors, use a self-priming sealant.


If no moldings are used, silicone sealant should be placed in gaps at floor, ceiling and between panels for moisture resistant installation. Remove excess silicone during installation or trim off after silicone has cured.

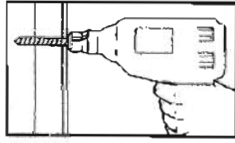
Remove excess silicone during installation or trim off after silicone has cured.

*CAUTION: Failure to use moldings and sealant may cause panel deterioration. In high moisture areas or in standing water, edge swelling and moisture absorption by substrate will occur if appropriate moldings and sealant are not used.*

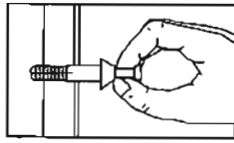
## Fasteners

Glasliner panels should be installed with non-corroding fasteners. Plastic pin rivets, chrome pin rivets, one piece nylon rivets, stainless nails or screws are recommended. See below. Fasteners should be installed to fit snug but should not be overtightened. Always select proper size fasteners for installation.

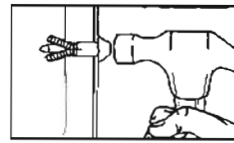
 Plastic pin rivet fastens panels to wood, metal, drywall, concrete, insulation material, etc. See diagrams below.



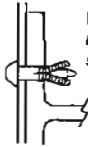
Easy to use. Drill a hole.  
(.275"-F Bit).



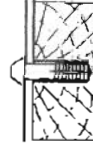
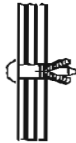
Remove dust and filings from  
the hole. Insert rivet.



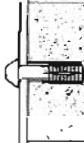
Hit the pin. The shank expands  
into or behind material for a  
tight, secure grip.




Rivet expands behind  
metal angles, posts,  
sheets or metal studs




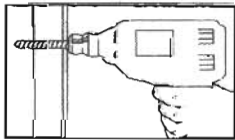
Rivet expands  
into solid furring  
strips, studs,  
substrates or brick,  
block concrete and  
drywall.



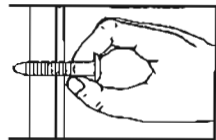
*NOTE: If pin in rivet does not drive flush when fastening into solid materials and applications where expansion may be restricted, use .261"-G bit.*

 Chrome pin rivet has high shear strength but should be used in low moisture area. Installation is the same as plastic pin rivet above.

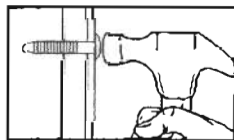
 One piece nylon rivet fastens panel to any wood substrate or wood stud. See diagrams below.



Easy to use. Drill a hole.  
(.281"-K Bit).

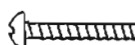


Remove dust and filings from  
the hole. Insert rivet.



Drive rivet flush.



 Stainless nails or screws can be used to install panels.

## Adhesives

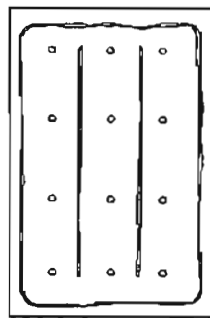
The use of general purpose construction adhesive when installing panels is recommended, along with fasteners. Whenever adhesive is used, follow manufacturer's instructions carefully. Many adhesives are flammable and some may not be compatible with paneling.

Glasliner Panels may be successfully installed over plaster board (drywall or gypsum) using only adhesive. However, it is recommended to use fasteners along with adhesive for best results. Adhesive failure is not panel failure.

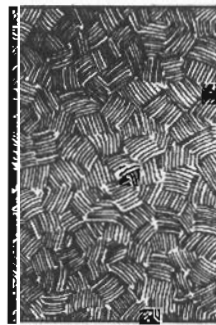
Adhesive should be applied to wall surface following adhesive manufacturer's recommendations. Typical applications are shown below.



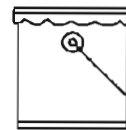
Adhesive



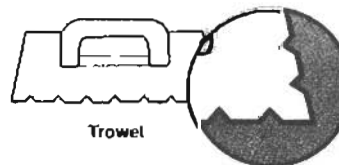
Cartridge Application



Trowel Application



Adhesive



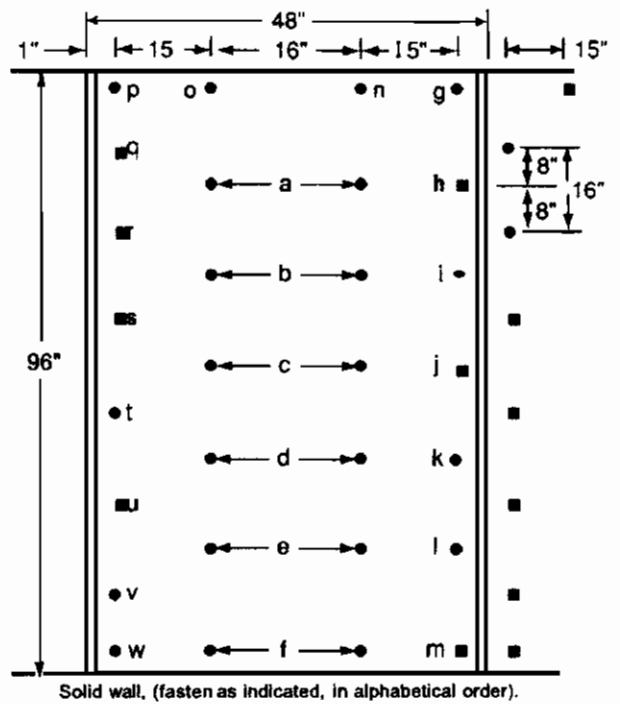
Trowel

Notches in trowel are  
1/4" deep x 3/16" wide  
and 1/2" on center.

After applying adhesive, tap surfaces of panel with a rubber mallet or block of wood to aid bonding of adhesive to wall and panel.

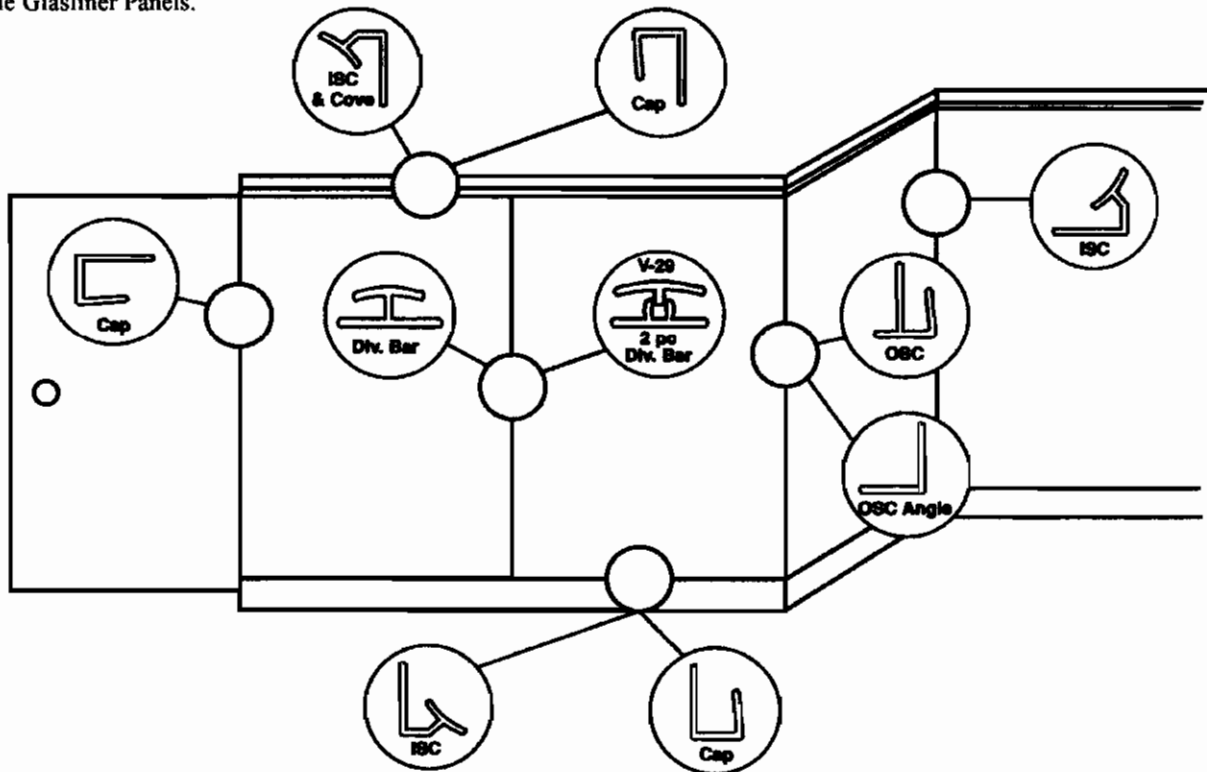
### Fastening/Fastener Layout

- First panel installed should be set true with a plumb line.
- Check plumb line during installation.
- Do not fasten edges of panels until moldings are in place. (Except when using face mounted moldings).
- Glasliner panel / fastener layout / solid wall:
  1. Fasten panel at center and work outward.
  2. Fasteners based upon 16" on center.
  3. Fasteners should be staggered on opposite panel edges and next to division bar for flat seam. See diagram at right.
  4. Liner panels should be pre-drilled for fastener installation using a guide panel.



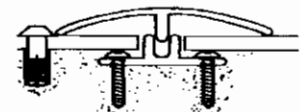
### Molding Installations

The diagram below shows the various moldings that can be used with the Glasliner Panels.



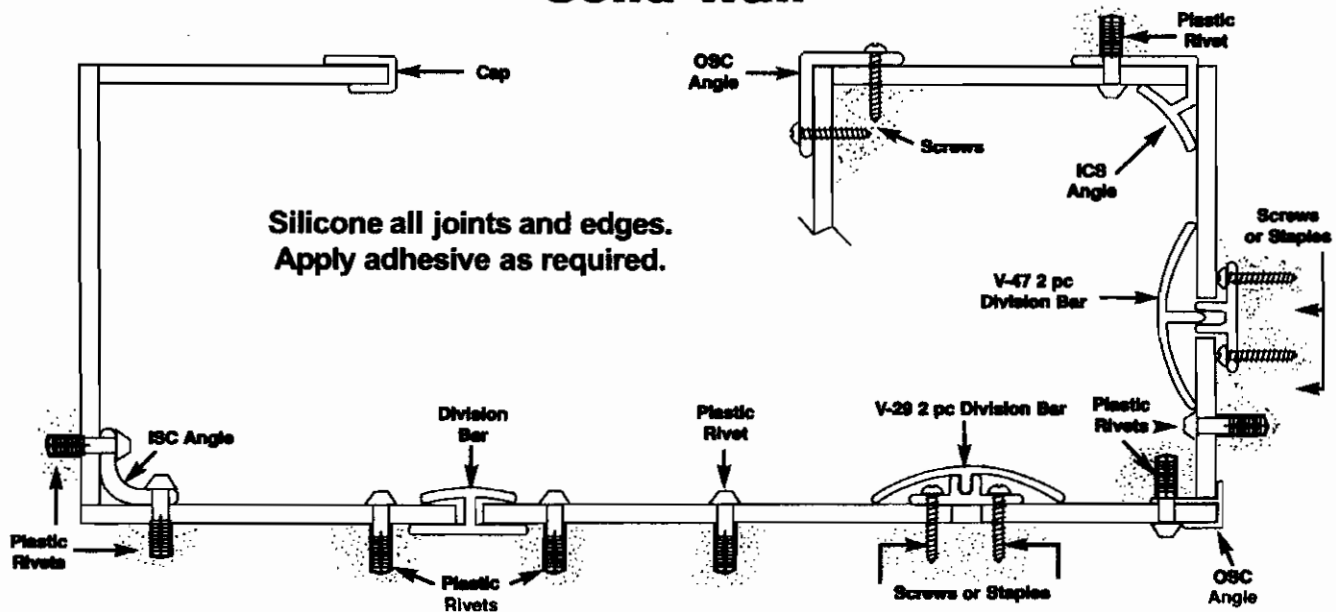
- Vinyl or aluminum moldings can be used in the above diagram.
- Vinyl moldings should not be used for exterior applications.
- Vinyl moldings are USDA accepted. Aluminum moldings should not be used where USDA acceptance is required.
- Cut moldings as needed for proper fit. The divider, ISC & OSC moldings may need to be cut to accommodate ceiling and base moldings.
- Place moldings on panels before fastening edges, if required.
- Always use moldings in high moisture areas.

NOTE; Glasliner Panel 2 pc division bar may be mounted as shown in diagram at right.



## Top View of Panel Installation

# Solid Wall



### Installation Reminders

1. Follow safety and fire guidelines during installation and use of panels. Compliance with local building codes is recommended.
2. First panel installed should be set true with plumb line. Check plumb line during installation.
3. Precondition panels prior to installation and allow for expansion and contraction during installation.
4. Use moldings, silicone, fasteners and adhesive with panels for best installation.
5. Remove excess silicone during installation or trim after silicone has cured.
6. Place moldings on panels, if required, before fastening panels.
7. Cut moldings as needed. For example: division bar may need to be cut to accommodate a ceiling or base cove.
8. Cut panels, if required, for proper installation.
9. Use hold-down clips if panels are used in a suspended ceiling.
10. Clean panels, if required, after installation.

### Cleaning Instructions

Glasliner Panels are designed for minimum care and maintenance. When cleaning panels, wash with a light detergent such as Spic & Span, Pine Sol, Mr. Clean, etc. Panels may also be cleaned with steam, high pressure sprayers, or soap and water. It is strongly recommended not to use abrasive cleaners on panels (i.e., SOS Pads, Ajax, Comet, etc.). Following these instructions, Glasliner Panels will give a fine and lasting appearance for many years.

Since Seller exercises no control over Buyers application or use of the product manufactured by seller ("products") may vary. It is understood that:

- (a) THERE ARE NO WARRANTIES, EXPRESSED OR IMPLIED, INCLUDING ANY WARRANTY OF MERCHANTABILITY OR FITNESS FOR ANY PARTICULAR PURPOSE.
- (b) While all data presented in Sellers technical sheets is based on the best information available to Seller and believed correct, such data is not to be construed as a warranty that the products will conform to such specifications. Such technical data sheets are subject to change without notice.
- (c) The liability of the Seller shall not exceed the purchase price of the products and the Buyer shall not be entitled to, nor Seller be liable for any consequential, incidental, indirect or special damages resulting in any manner from the furnishing of the product or any damages of any kind arising from the use of the products.

**DISCLAIMER and LIMITATION of Liability:** The information contained in this literature is presented in good faith, and is believed to be accurate and reliable at time of publication. No representation, guarantee or warranty is made as to the completeness, reliability or accuracy of this information. This also includes NO IMPLIED WARRANTY OR MERCHANTABILITY OR FUNCTIONAL USE FOR SPECIFIC APPLICATION.



425 Industrial Drive • Moscow, TN 38057  
Phone: (901) 877-3010 • Fax: (901) 877-1388  
[www.glasteel.com](http://www.glasteel.com)